

Boulder City Conservation Easement

Stefanie
Ferrazzano

28 August 2017



MOJAVEMAX.COM



desert conservation
PROGRAM

BACKGROUND



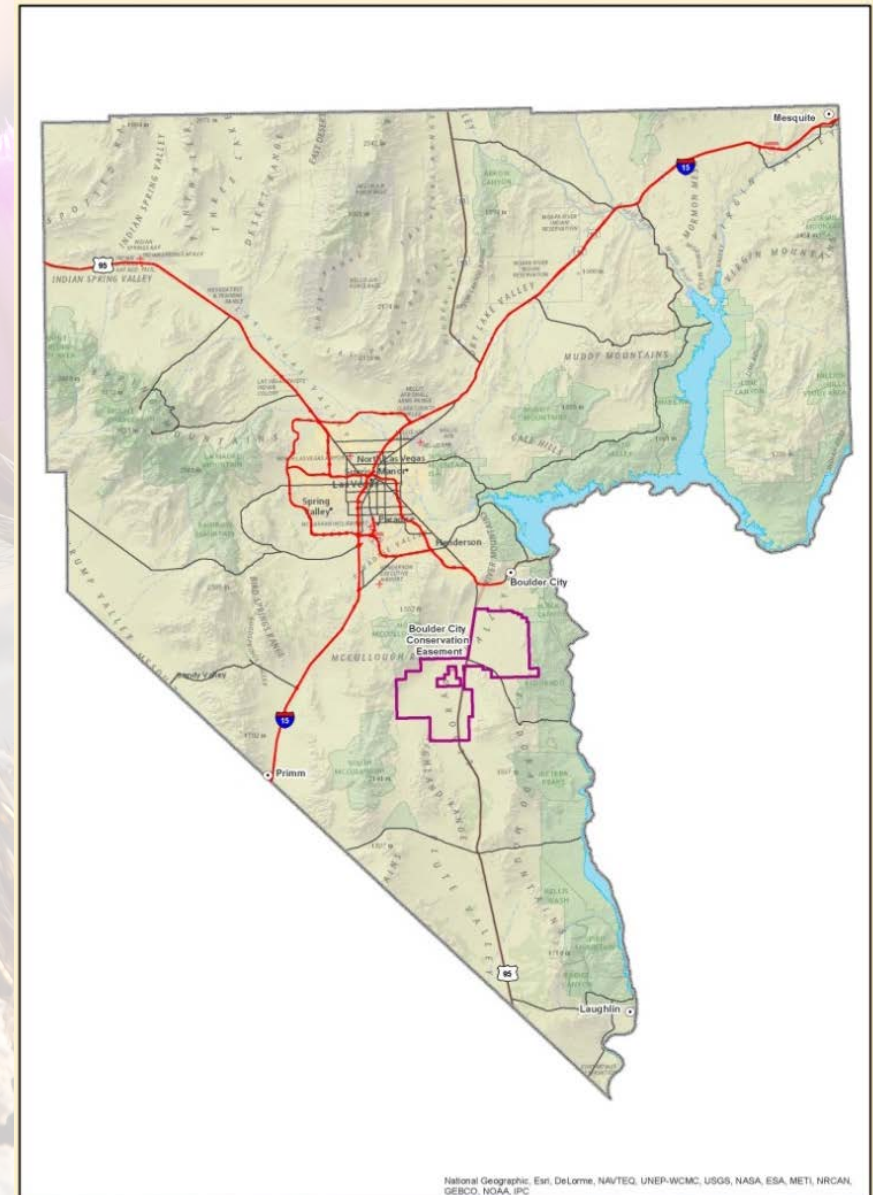
- Clark County acquired the easement in 1995 as a permit condition
- Purpose:

“...ensure that the property is retained in a natural condition, and to prevent any uses that will impair the conservation, protection restoration and enhancement of the natural resource values, especially those values associated with habitat for the desert tortoise and other indigenous flora and fauna.”

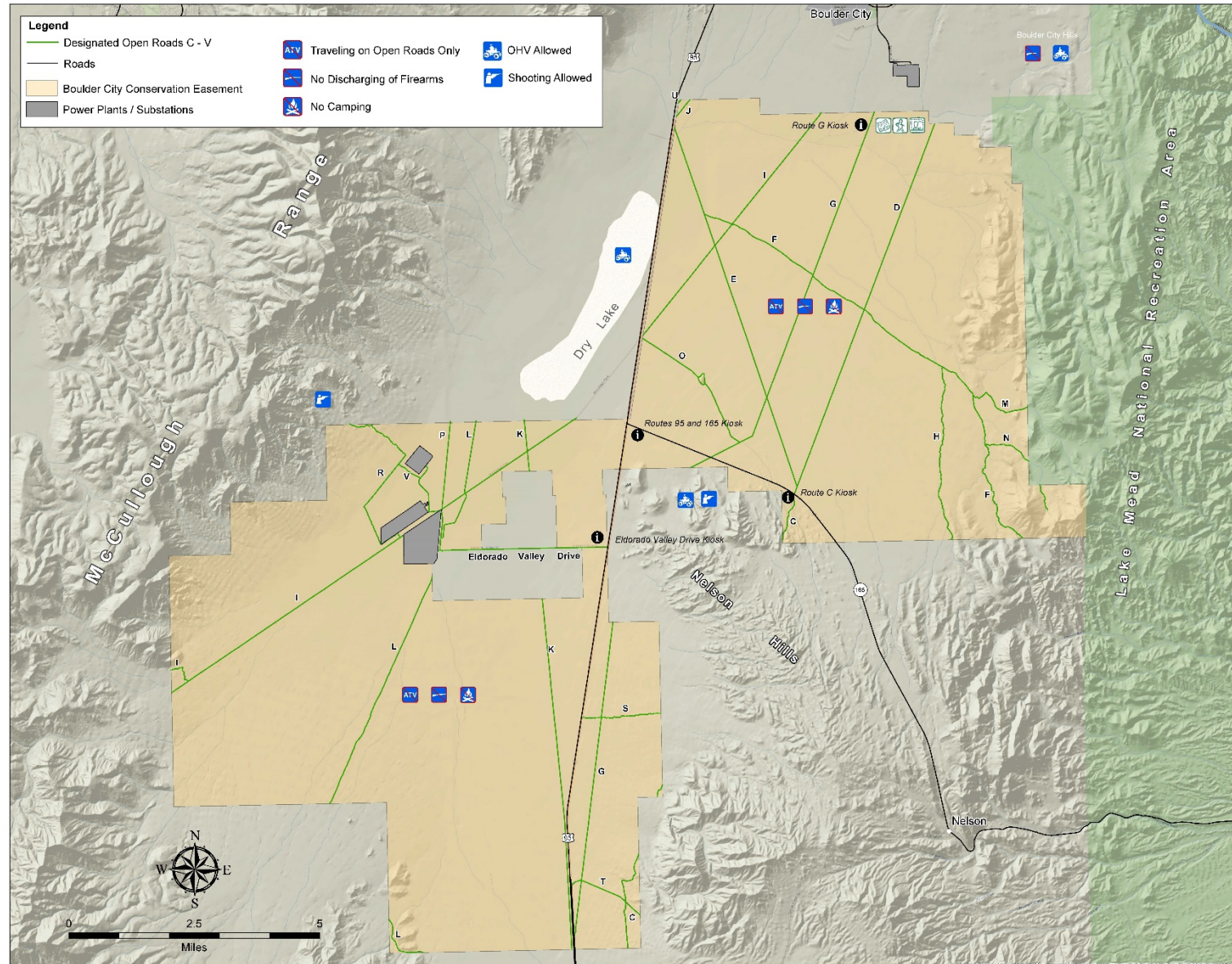
BACKGROUND



- Approximately 86,540 acres
- Bisected by U.S. 95 and S.R. 165
- Highly accessible to the public (95 miles of open roads)
- Limited use area
- Energy zone, substations, and switching yards
- 58+ rights-of-way



BACKGROUND



MANAGEMENT ACTIVITIES

- Desert tortoise occupancy surveys
- Range-wide desert tortoise monitoring
- Desert tortoise predator studies
- Weed inventory and treatment



MANAGEMENT ACTIVITIES

- Fence installation around the energy zone
- Monitor and work with energy developers
- OHV user outreach and story map development
- New speed limit stickers installed on road signs
- OHV traffic monitoring with traffic counters



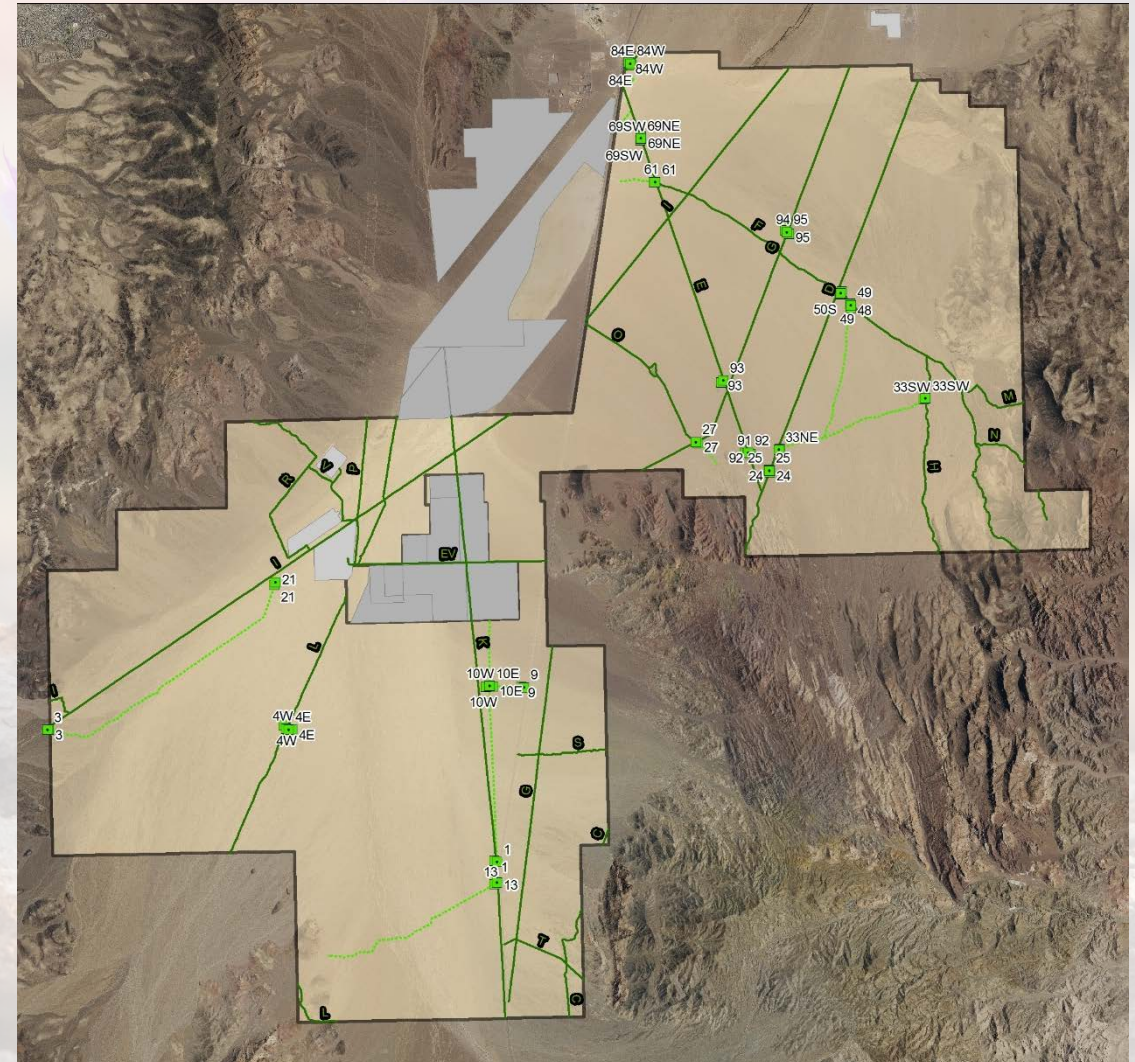
MANAGEMENT ACTIVITIES

- Ongoing signage, fencing, gate, trash, cattle and tortoise guard maintenance
- New Kiosks and new brochure box installed on Buchanan Blvd. Kiosk
- All new limited use signage installed
- Installation of carsonite signs on new off-road tracks and washes
- Law enforcement with Boulder City Police



RESTORATION UPDATES

- 28 sites restored in 2013 and 2014
- Planted with live creosote bushes and white bursage
- Goals:
 - Close road access points
 - Allow roads to be reclaimed by landscape
 - Provide more functional habitat for desert tortoise and others



RESTORATION UPDATES

- 17 of 26 show evidence of trespass by motorized vehicles
- 17 of 26 are still functional; 2 are questionable
- All creosote bushes from original planting are dead; most sites being colonized by shorter-lived species
- Ephemerals are colonizing all sites
- All sites but one are free of noxious weeds



Route 3 Before



Route 3 After

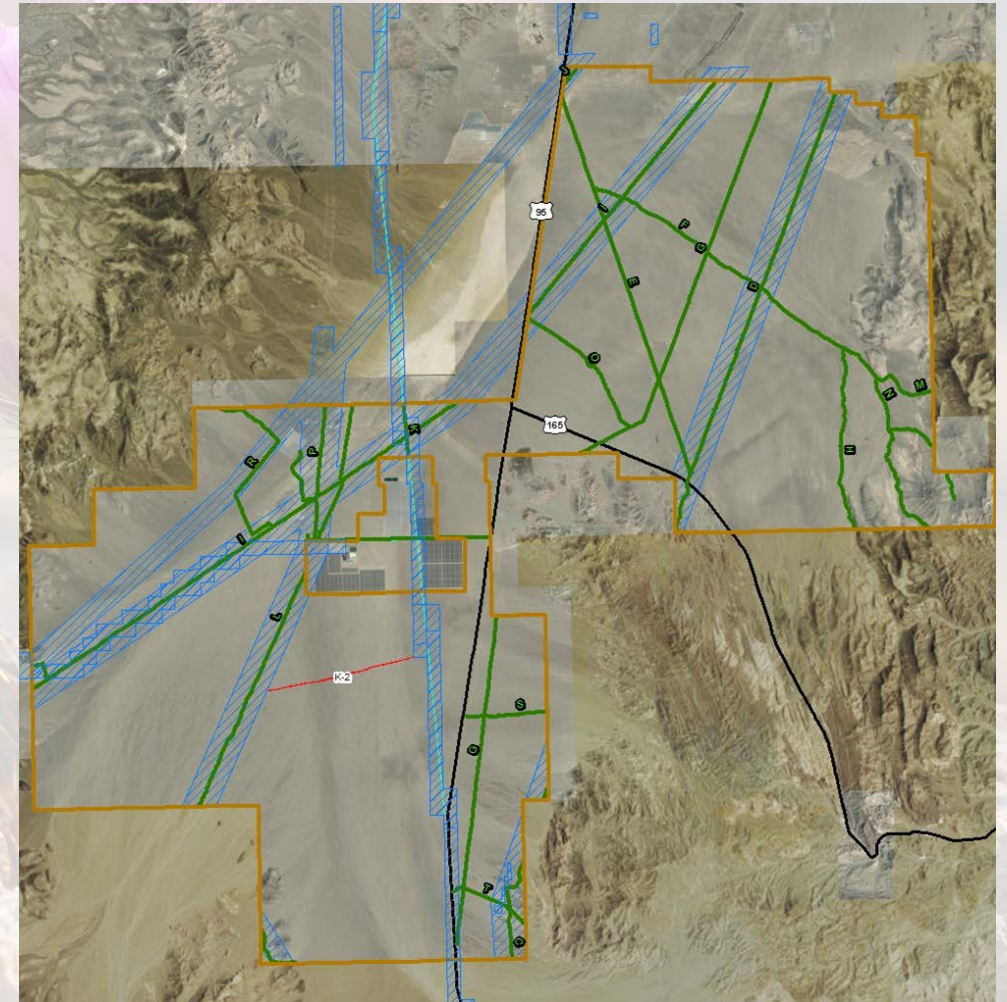
RESTORATION UPDATES



K-2 PROJECT



- Part of our larger restoration efforts
- Part of an old race track
- Will compare effectiveness of bare seeding vs. seed pellets or wafers and an unseeded control
- Progress will be monitored to inform other restorations on the BCCE



K-2 PROJECT

Current Conditions: On the Route and Reference Sites



K-2 PROJECT



Current Conditions: Eastern Access



K-2 PROJECT

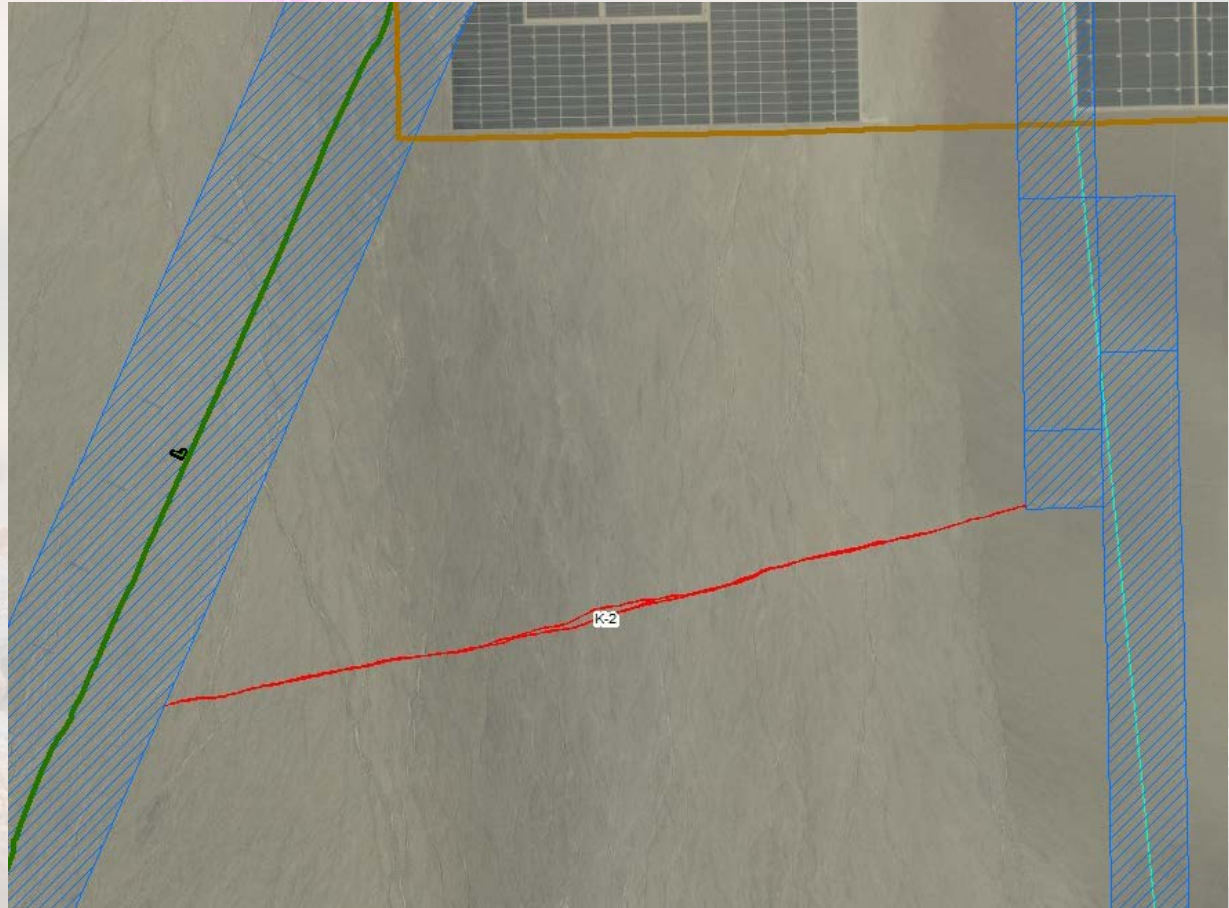


Current Conditions: Western Access



K-2 PROJECT

- Seeding area is 4.6 km in length
- Will be divided into 24 sections of ~180 m each
- Data to be collected:
 - Density and frequency of plants
 - Percent cover
 - Surface line-point intercept
 - Soil Stability
 - Soil Compaction
- Both access points are in ROW





MOJAVEMAX.COM



desert conservation
PROGRAM

THANK YOU TO THE PERMITEES



QUESTIONS?

